



CONTROLS & DRIVES LTD

The Industrial Automation Specialists

# GX Works3



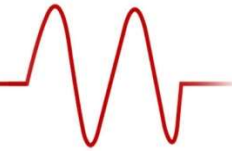
Technical Tip:

How to Identify Unused Global Labels in GX Works3



Part of the **B P X** Group



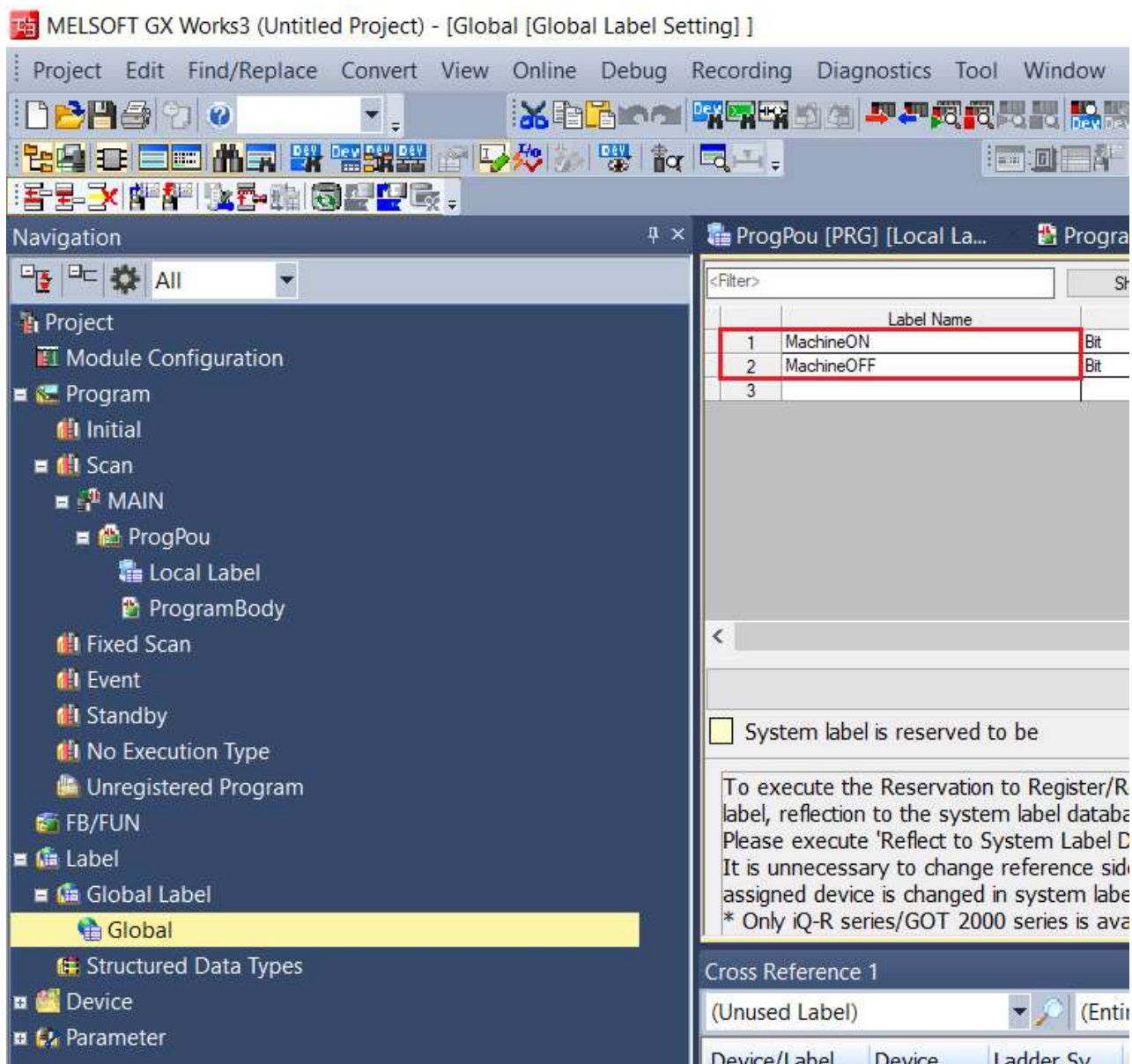


How can you easily identify if any of your unused Global Labels are not being used in your FX5 PLC program?

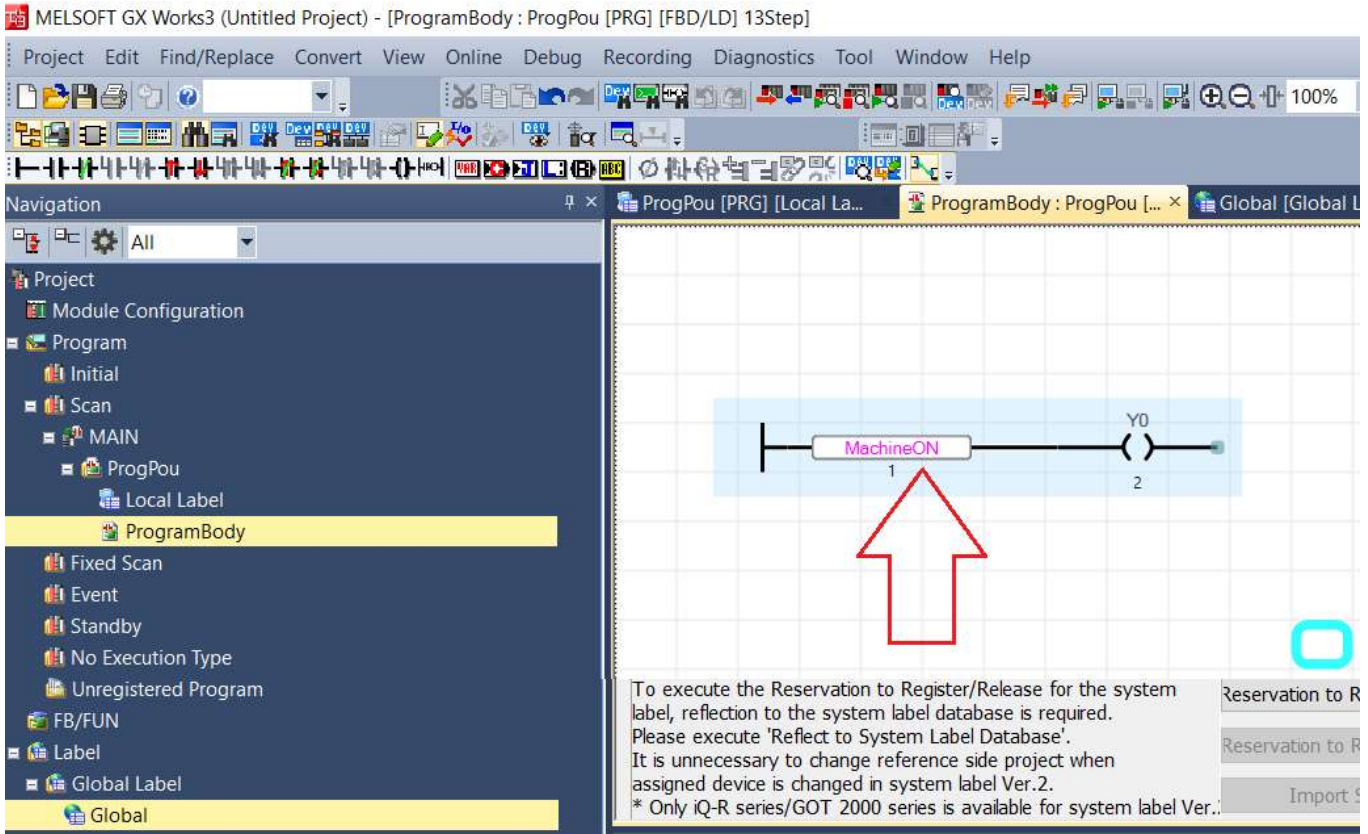
Here is how to do it...

Below is a list of two Global Labels I have created for this exercise.

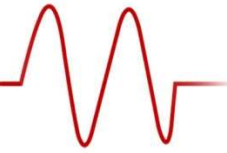
They are **'MachineON'** and **'MachineOFF'**.



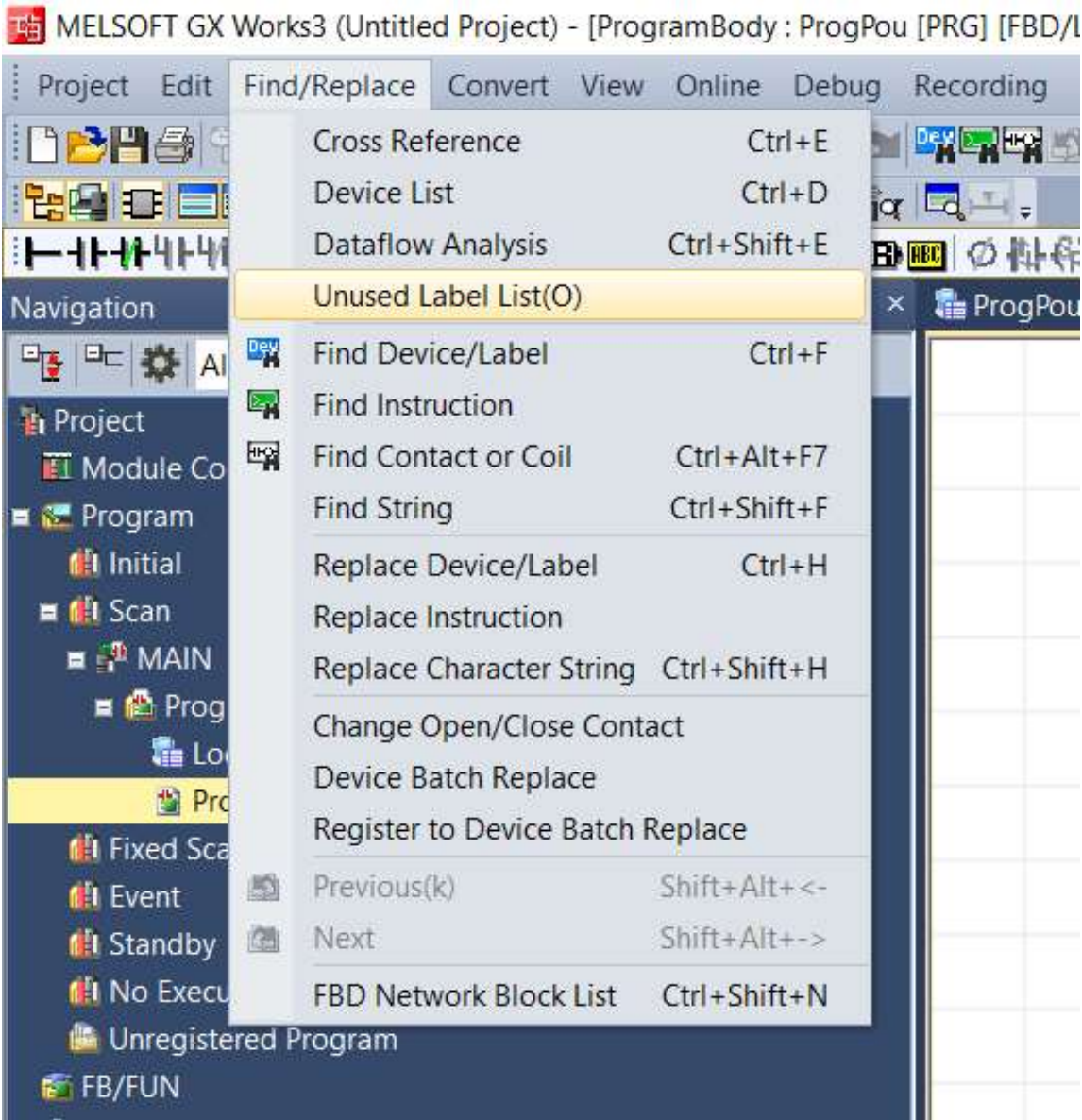
'MachineON' is the only label I am using in my whole PLC code, whereas 'MachineOFF' is a label which has been created, but is not being used.

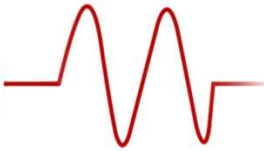






Go to the menu **Find/Replace** and click **Unused Label List(O)**





This brings up a **Cross Reference** window found at the bottom of the work area.

In this window select **'(Unused Label)'** and **'(Entire Projects)'** and then click on **'View'**.

This then populates any unused Global Labels in the Device/Label column – please see below.

Device/Label	Device	Ladder Sy...	Position	Program File Name	Data Name	English
B MachineOFF			2Line1Column		Global	

This is a handy option when you have a large Global Label List and want to remove or use any Global Labels which you have already created in your Global Label List.

