



CONTROLS & DRIVES LTD

The Industrial Automation Specialists



e-Manual Viewer

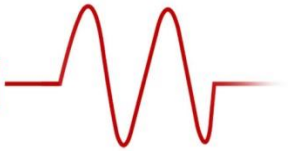
Technical Tip:

Updating & Viewing Mitsubishi manuals using

'e-Manual Viewer'



Part of the **B P X** Group



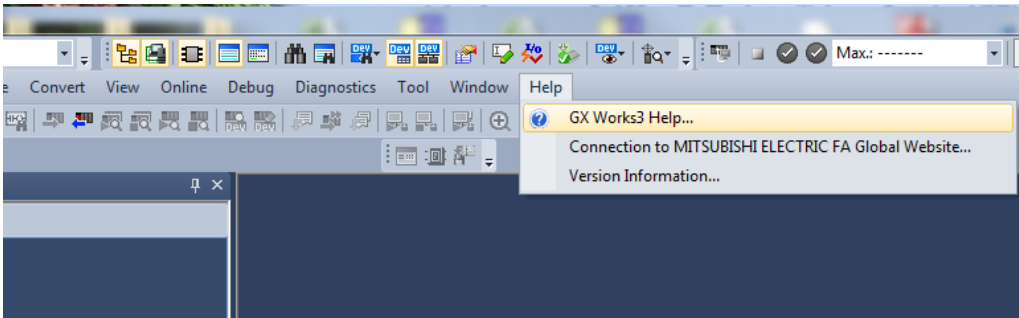
Updating & Viewing Mitsubishi manuals using e-Manual Viewer

Updating e-Manual Viewer

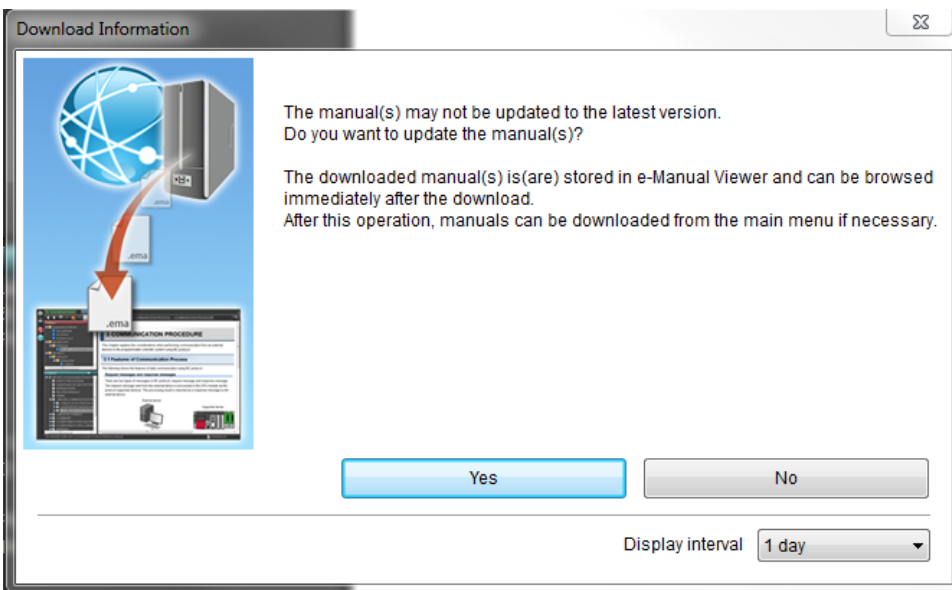
1: Start up GX Works3

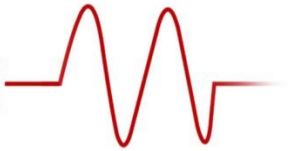


2. Go to GX Works3 Help:



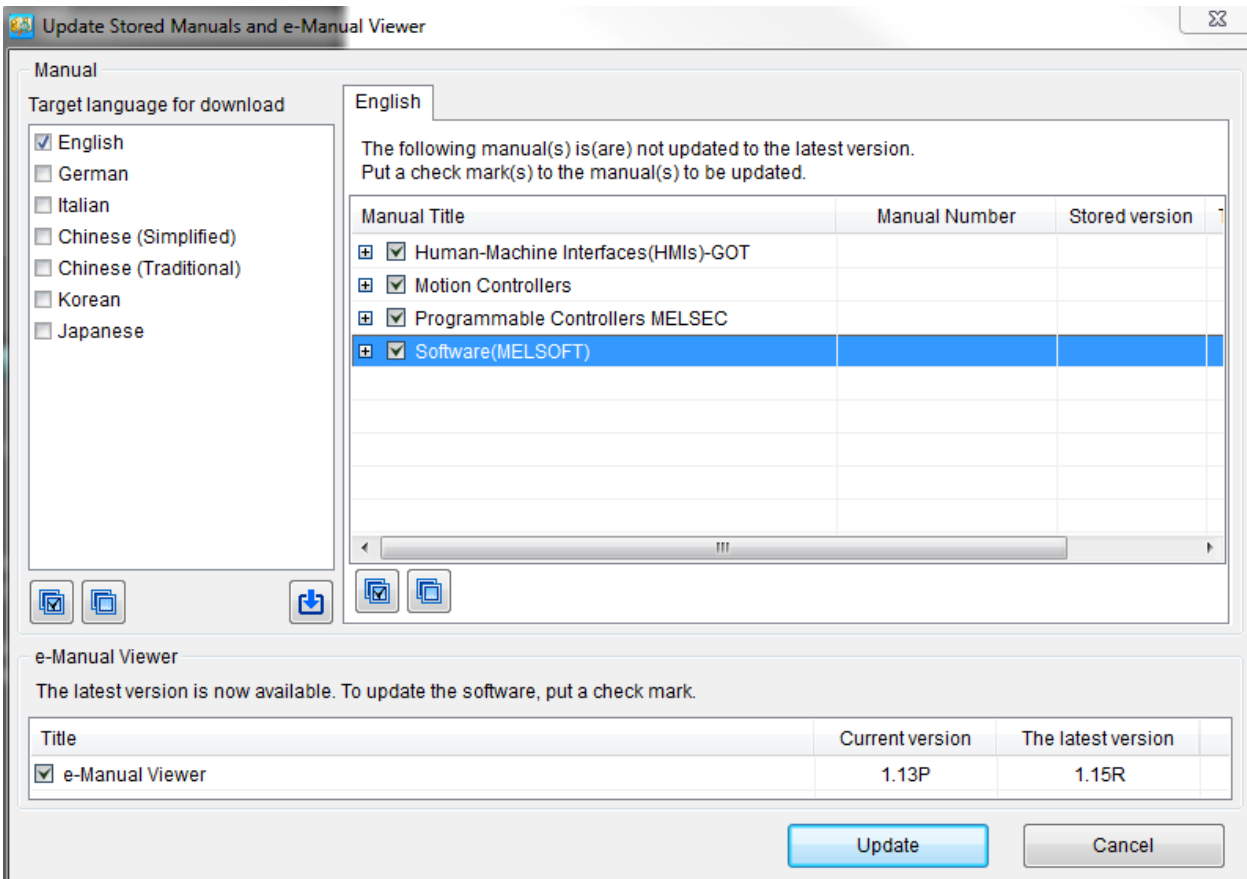
3: You will be prompted if you need to update your manuals 'Click Yes':



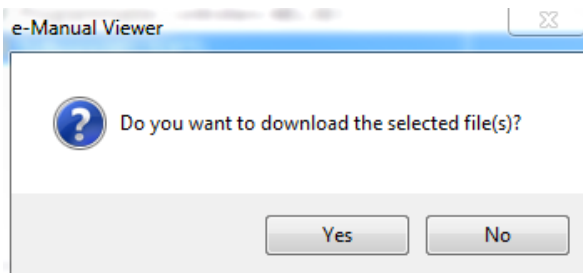


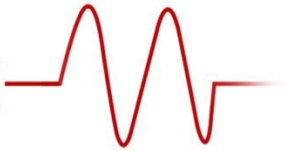
4: You will get an option to update manuals you prefer. It is recommended to update all.

Tick all the boxes including E-manual Viewer. 'Click Update'

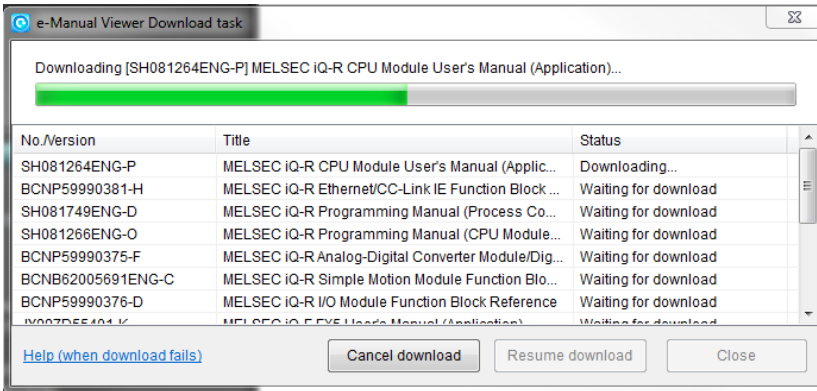


5: 'Click yes' to this prompt

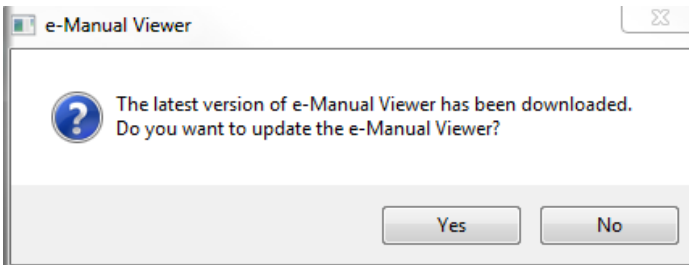




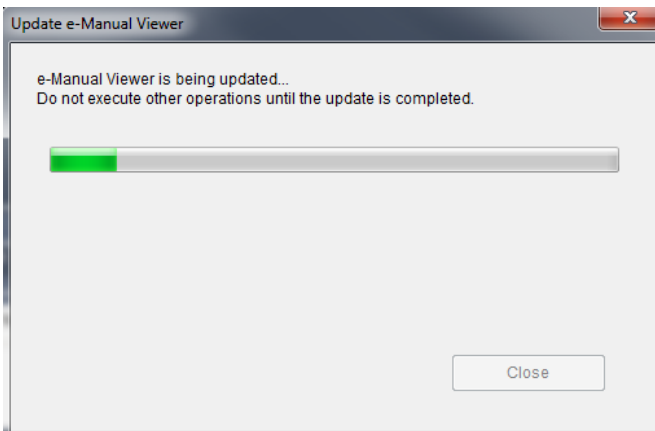
6: Wait for download to finish. (May take a few minutes to complete)



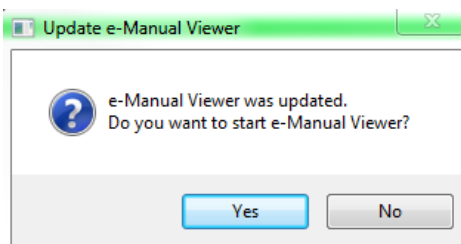
7: 'Click Yes' to this prompt.



8: Wait while being update (may take a few minutes to complete)

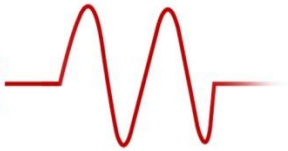


9: Once completed you can start e-Manual Viewer



The Next time you go to 'Help' in GX Works 3 the e-Manual viewer will be started without updating and updates will be prompted as and when required.





E-Manual Viewer

1: You will get a brief Introduction on how to use the Category tab.

Introduction (How to use the Category tab)

First

- **Cross-searching for the keyword**
By putting a check mark to the model name(s), the search range is narrowed down to the specified products. If all check marks are cleared, all the product documents are searched for the keyword.
- **Opening a document**
Double-click the model of the target product.

Figure contents function

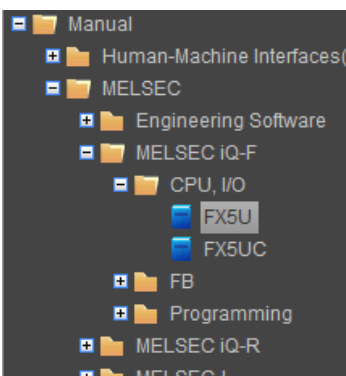
For documents with icons in the model names, the "figure contents" function is available. Using this function, information such as hardware specifications can be found from each part of a product in a product figure. To display the figure contents, select the model of the target product and click the button or select "Search Figure" from the right-click menu.

Features

Relevant information can be browsed intuitively from a figure of a product without searching manuals even if users do not know specific names and detailed information.

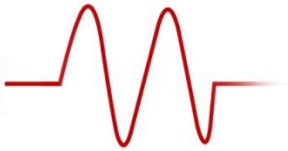
Do not show this window again Close

For example for FX5U application manual:



You can use this method to view a specific manual using the drop downs in the navigation pane.





2: 'Cross Document to search' to search for something specific, for example 'Timer Device'



.....



Type in your preferred subject then 'click' on the magnifying glass.

.....

Search result will look like this:

[27.2 User Devices Timer \(T/ST\) - \[JY997D55401-K\] MELSEC IQ-F FX5 User's Manual \(Application\)](#)

Device whereby measurement starts when the timer coil is turned ON, time up occurs when current value reaches the setting value, and an addition type counter. Wh...

[Timer \(T/ST\) Types of timers - \[JY997D55401-K\] MELSEC IQ-F FX5 User's Manual \(Application\)](#)

...timers (T) for which current value is maintained in 16 bits, and retentive timers (ST) that maintain the current value even when the coil is rs (T) becomes "0" whe...

[Timer \(T/ST\) The difference between a timer and a routine timer - \[JY997D55401-K\] MELSEC IQ-F FX5 User's Manual \(Application\)](#)

...timer and a routine timer. Item Timer Routine timer Resolution 100 ms/10 ms /1 ms 100 ms The timing of counting (count up) When th ction is executed · When the OUT ...

[Timer \(T/ST\) Routine timer setting - \[JY997D55401-K\] MELSEC IQ-F FX5 User's Manual \(Application\)](#)

...timer is made. Navigation window [Parameter] [FX5UCPU] [CPU Parameter] "Memory/Device Setting" "Device/Label Memory Ar tem Description Setting range Default...

[3.3 Application Instruction Special timer instruction - \[JY997D55801-K\] MELSEC IQ-F FX5 Programming Manual \(Instructions, Standar](#)

...timer Instruction symbol Description Reference TTMR TON: On time of TTMR TTMR ■ Special function timer Instruction symbol Descri om the bit device specified by (d) o...

[Timer OUT T, OUTH T, OUTHS T, OUT ST, OUTH ST, OUTHS ST - \[JY997D55801-K\] MELSEC IQ-F FX5 Programming Manual \(In](#)

...Timer set value 0 to 32767 16-bit unsigned binary*4 ANY16*4 EN Execution condition Bit BOOL ENO Execution result Bit BOOL *1In 1 BD/LD language, d displays as Coil. ...

Once you click on any of these hyperlinks it will open up that specific subject matter in a specific manual.

Timer

OUT T, OUTH T, OUTHS T, OUT ST, OUTH ST, OUTHS ST

The timer counts up to the set value when the operation result up to the OUT instruction is ON and the coil of the timer/retentive timer specified by (d) turns ON. When the timer times up, NO contact becomes conductive and NC contact becomes non conductive.

| Ladder diagram | Structured text |
|----------------|---|
| | ENO:=OUT_T(EN,Coil,Value); ENO:=OUTH(EN,Coil,Value); ENO:=OUTHS(EN,Coil,Value); |

FBD/LD

(*OUT_T, "OUTH", "OUTHS" enters □.)

Setting data

■ Descriptions, ranges, and data types

| Operand | Remarks | Range | Data type | Data type (label) |
|-------------|---------------------|------------|------------------------|-------------------|
| (d) | Timer Number | — | Timer/retentive timer | ANY |
| (Set value) | Timer set value | 0 to 32767 | 16-bit unsigned binary | ANY16 |
| EN | Execution condition | — | Bit | BOOL |
| ENO | Execution result | — | Bit | BOOL |

